

Urban Infrastructure Resilience Programme

Brazil – Limited Call for Proposals 2026



1. Context

1.1 About CDRI

The Coalition for Disaster Resilient Infrastructure (CDRI) is a global partnership of national governments, UN agencies, multilateral development banks, financing institutions, private sector, and academic and knowledge institutions that aims to promote the resilience of infrastructure systems to climate and disaster risks, thereby ensuring sustainable development. The Infrastructure Resilience Accelerator Fund (IRAF) is CDRI's Multi-Partner Trust Fund, established with the support of the United Nations, to implement the vision and strategic work plan of the Coalition.

1.2 About Urban Infrastructure Resilience Programme (UIRP)

CDRI's Urban Infrastructure Resilience Programme (UIRP) aspires to enhance urban liveability by promoting resilient infrastructure planning and implementing data-driven decision-making processes to manage urban shocks and stresses. The programme supports Coalition Member Countries in integrating climate and disaster resilience into infrastructure planning, operation, and maintenance, augmenting investments and ensuring sustainable and resilient urban development.

Since the launch of the Urban Strategy in 2023 at COP28, CDRI has been supporting cities across Member Countries via initiatives such as technical assistance grants via Calls for Proposals (CfPs), Communities of Practice, and the development of guidelines and training modules for addressing extreme heat and water challenges.

In alignment with the UIRP Strategy, the First Call for Proposals announced in 2024 was targeted at Low- and Middle-Income Countries (LMICs) and Small Island Developing States (SIDS). This Call was in response to demand from Member Countries for technical assistance to ensure their investments are aligned towards the shared ambition of disaster and climate resilience of new and existing infrastructure.

The First Call garnered overwhelming interest with proposals from over 150 cities across 23 CDRI Member Countries. From these, 15 cities in 4 countries are presently under various stages of implementation. The grants provided from IRAF are expected to influence \$160 million¹ new infrastructure investments and save approximately \$90 million in operation and maintenance costs.

This Limited Call for Proposals invites proposals from cities across Brazil. Details on eligible organizations and sectoral, thematic scope are provided in section 2.

¹ Unless otherwise specified, all values preceded by the "\$" symbol are in US dollars/

Box 1: Brazil – Climate Trends 2024–2026

Brazilian cities are increasingly exposed to extreme and compounding climate risks. Between 2024 and 2026, record-breaking floods, heatwaves, and droughts have caused widespread disruption to cities and their critical infrastructure systems.

Key climate trends over the past two years include:

- Intensifying urban heat island effects in megacities across the country;
- Dual exposure to extreme heat and flooding within the same year; and
- High rainfall and recurrent flooding, exacerbated by inadequate urban drainage especially in South and Southeastern Brazil.

In April 2024, Rio Grande do Sul experienced its most severe flooding in decades, affecting nearly 400 cities and disrupting transport, water, energy, and essential services. Most recently, the 2026 floods in Juiz de Fora demonstrated how damage to urban mobility systems can cause cascading impacts across infrastructure sectors and result in supply chain disruptions.

At the same time, Brazilian cities are also experiencing rapid warming. Over the past five years, average temperatures have increased by approximately 1–1.5°C, intensifying heat stress in urban areas. In February 2025, Rio de Janeiro experienced decade-high temperatures of 44°C, leading to school closures and increased stress on urban services. This was followed by drought conditions across Rio Grande do Sul and the Amazon Basin, further straining water supply and energy systems.

These climate events underscore the urgent need for integrated, systems-based solutions to strengthen urban resilience.

With upcoming infrastructure investments in Brazil projected to be about [\\$54 billion by 2030](#), embedding resilience in their design and execution provides the opportunity to lock in resilience as opposed to risk. Developing resilient infrastructure will help avoid asset loss, reduce spending on repair, and minimize disruption of critical services. Additionally, it will support economic growth and social development through enhanced service resilience and reduced carbon emissions resulting in improved biodiversity and cleaner air and water.

2. UIRP – Limited Call for Proposals for Brazil

2.1 Objectives

This CfP aims to support cities in Brazil in the application of data, tools, and knowledge that could lead to improved design, operation, and maintenance of infrastructure, and to mobilize further bespoke technical assistance.

This CfP has the following objectives:

1. Enhancing access and application of data, tools, and knowledge by Urban Local Bodies (ULBs) leading to improved design, operation, and maintenance of infrastructure.
2. Increasing access to infrastructure finance through Multilateral Development Banks (MDBs) / investment banks / financing corporations.

Cross-Cutting Principles

All proposals submitted under this CfP shall:

- Integrate Gender Equality, Disability, and Social Inclusion (GEDSI) considerations throughout project design and implementation;
- Demonstrate meaningful stakeholder engagement, including consultation with vulnerable and at-risk populations where relevant;
- Contribute to strengthening climate and disaster resilience of infrastructure systems;
- Promote sustainability, scalability, and replicability of project outcomes; and
- Comply with applicable environmental, social, fiduciary, and safeguarding requirements.

The expected outcomes of the projects funded within this CfP are:

Outcome 1: Risk-informed infrastructure planning and development

Urban Local Bodies use data and tools to inform infrastructure development by including sustainable solutions to existing and new infrastructure.

Outcome 2: Integrating resilience into infrastructure operations and maintenance

Cities manage and operate infrastructure systems during extreme climate events and are equipped for resilient recovery.

Outcome 3: Augmenting financial resources

Cities get funding from financial institutions / MDBs and access to national budget.

Outcome 4: Improved awareness and capacities

Practitioners are trained in urban infrastructure resilience to inform/influence projects, programmes, and investments.

2.2 Criteria for Proposals

2.2.1 Scope: Country, Hazards, and Sectors

The CfP is exclusively open to cities in Brazil. The ambition is to provide support in building resilience against extreme temperatures and water challenges (flooding, drought, water scarcity, and water security), which stood out in consultations as the critical threats confronting cities. Proposals can be for a single city or for multiple cities in Brazil.

Project proposals under this CfP must align with one or more of the following infrastructure sectors:

- **Energy:** Distribution systems, substation design, etc.
- **Social infrastructure:** Hospitals and schools
- **Transportation:** Buses, railways, metro rail, paratransit, etc.
- **Water:** Water supply, sanitation, water treatment plants, stormwater drainage, canals, lakes, rivers, etc.

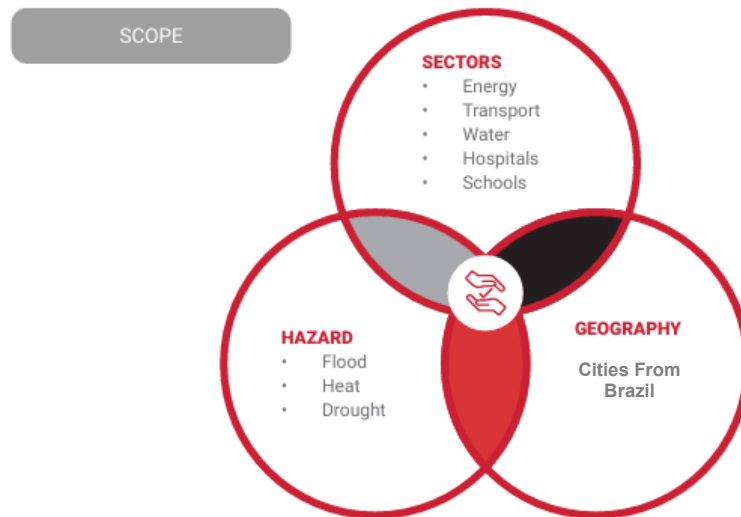


Figure 1: Scope: Geography, Hazards, and Sectors

2.2.2 General Criteria

Proposals must align with CDRI’s vision and mission and substantially contribute to UIRP objectives and outcomes by contributing to the general criteria of the CfP:

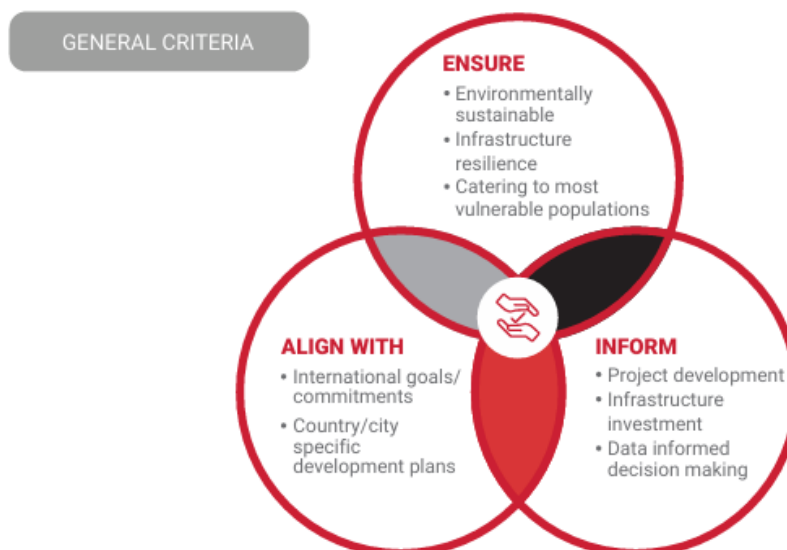


Figure 2: General criteria

2.2.3 Thematic criteria

The CfP shall support project development for risk-informed planning, data for decision making, resilient recovery, and climate adaptation investment strategies, including integration of nature-based infrastructure solutions.

Project proposals may focus on the indicative list of interventions provided below. This list should not be considered exhaustive; other interventions may also be considered. Other innovative project proposals can also be proposed, if they are aligned with the UIRP themes and outcomes.

Theme 1: Project development support for risk-informed urban infrastructure design and planning

Given the current context of climate variability and the infrastructure investment opportunities in LMICs, designing and integrating disaster risk information into cities' urban development plans, projects, and programmes is imperative. Proposals could focus on enhancing urban infrastructure resilience by incorporating climate risk information and disaster resilience into various stages of urban planning and development.

Potential interventions:

- Developing and integrating climate and disaster risk information into national and local urban development, master plans, land suitability analysis, and city building byelaws and codes with a focus on public and social infrastructure;
- Integrating climate and disaster resilience into urban infrastructure project planning, contract, and procurement documents;
- Including climate and disaster risk resilience in project feasibility reports, investment reports, comprehensive project development, detailed project reports, and appraisal reports for planned projects where implementation funds are available;
- Designing, developing, and implementing infrastructure governance including monitoring and evaluation mechanisms to improve the resilience and quality of planned infrastructure investments; and
- Feasibility assessment for investment planning to catalyse funding for risk-informed urban infrastructure development.

Theme 2: Data for decision-making including impact-based early warning systems

Access to data platforms will aid cities in collating information, geospatial visualization, and interpreting it into actionable steps. Risk assessment using regional and granular urban data provides vital insights to embed resilience in the design and planning of urban infrastructure. Proposals could focus on informed decision-making by strengthening access to climate risk information and enhancing capacities to analyze spatial data. In addition, this theme emphasizes the role of early warning systems to enhance safety and resilience in the face of emerging threats.

Potential interventions:

- Development of hazard, vulnerability, and risk information, and design of adaptation/mitigation options for urban infrastructure projects in the pipeline;
- Assessing the performance of urban early warning systems to enhance data surveillance for managing climate risks and to develop impact-based warnings and advisories for critical infrastructure sectors;
- Developing data collection and management strategies to integrate early warning, weather, and climate information for informing urban infrastructure operations and management;
- Designing and implementing city-level data systems to monitor the availability, accessibility, and quality of infrastructure service delivery for vulnerable communities/groups; and
- Mainstreaming ISO codes for urban infrastructure resilience by establishing processes for data collection and management systems in cities where data initiatives of local governments are underway.

Please note that all proposals under this theme should include clear activities and results for the application of data and early warning systems to critical infrastructure sectors.

Theme 3: Support for resilient recovery

Assessment of existing urban infrastructure data, damage and loss databases, and socio-economic recovery needs are crucial for risk-informed rebuilding. In cities where funds for implementation are available, ensuring the quality of infrastructure and enhancing the capacities of urban professionals could play a vital role in building systemic resilience. Proposals could focus on supporting the resilient recovery of urban infrastructure systems in post-disaster scenarios. In addition, this theme emphasizes the need for review and revision of building codes/byelaws to safeguard against future climate scenarios.

Potential interventions:

- Developing recovery and rebuilding strategies for urban infrastructure systems;
- Retrofitting options for urban infrastructure systems to safeguard against future climate extremes (where funds for implementation are available);
- Conducting reviews and revisions of city building byelaws and codes to safeguard against future climate extremes;
- Developing financing strategies for post-disaster recovery and reconstruction efforts for urban entities; and
- Enhancing the capacities of infrastructure managers to enable risk-informed recovery planning.

Please note that while CDRI does provide support for Post Disaster Needs Assessments, this particular CfP will not support such activities.

Theme 4: Resilient infrastructure and climate adaptation investment strategies, including nature-based infrastructure solutions

Given the multifaceted benefits nature-based infrastructure solutions offer to cities, including flood defence, extreme heat mitigation, and stormwater runoff management, incorporating

them within infrastructure projects and investments is crucial. However, operational and management challenges have limited their widespread adoption. The proposals could focus on promoting resilient infrastructure and climate adaptation investment strategies in public infrastructure projects. In addition, this theme emphasizes the use and application of tools as well as designing and piloting financing mechanisms.

Potential interventions:

- Developing guidelines for the integration and implementation of nature-based infrastructure solutions within planned urban projects and programmes;
- Implementing monitoring, evaluation, and governance mechanisms to improve the quality of urban infrastructure investments within planned initiatives or ongoing projects;
- Promoting the development and use of open-source tools and applications for risk assessment and the identification of resilience options within urban planning and infrastructure development;
- Technical support in designing and piloting financing mechanisms such as credit enhancement, blended finance, and municipal/green bonds to leverage public and private sector capital for promoting resilience and climate adaptation within infrastructure investments; and
- Designing parametric insurance for urban services (where funds for implementation are available, as this grant cannot be used to support insurance payouts).

2.3 Funding Value and Duration

A grant of a maximum of four hundred thousand US dollars (\$400,000) is available for this Call.

The duration of funded projects must range from 12 to 24 months from award to implementation.

Single-city proposal: The proposals submitted by participating organization(s) (hereafter referred to as applicant²) should be endorsed by the relevant city government / national government. The applicant, together with the implementing partner organization³ (if any), should have proven experience in the specific theme/sector and adequate technical and institutional capacity to implement the project.

Multi-city proposal: A joint proposal for providing technical support to multiple cities within Brazil that aligns with the theme/sector can be submitted. A multi-city proposal should be endorsed by the concerned ULBs or the provincial/national government, which will be the recipient of the technical assistance.

Preference will be given to proposals where the technical support is likely to inform the infrastructure project pipeline or investment plans in cities where funds for implementation are already in place. However, co-funding is not mandatory.

² "Participating Organizations" are designated organizations that have become principal recipient / principal grantee of the Fund. They are referred to as "Applicant" in the application process/stages.

³ "Implementing Partners" are designated entities that would be sub-contracted by Participating Organizations to deliver specific results as sub-grantees. In the application process/stages, they are referred to as "Partner(s) / Partner Organization(s)."

2.4 Application Process

Application in the prescribed form and with all attachments⁴ should be submitted online through the CDRI portal.

No other form of submission will be considered eligible.

- 1) Application in the prescribed format
- 2) Budget summary and details
- 3) Work plan
- 4) CV of key resource persons from applicant organization
- 5) Letter of support
- 6) Overview presentation in the template provided
- 7) Procurement plan (if the value of procurement is above \$100,000)
- 8) Harmonized Approach to Cash Transfer (HACT) micro assessment report conducted within the last five years for non-UN organizations
- 9) Prevention of Sexual Exploitation, Abuse, and Harassment (PSEAH) assessment conducted within the last five years for non-UN organizations

2.5 Eligibility of the Applicant

A single organization or consortium of organizations are eligible to apply for the CfP. However, each project proposal must select and identify one applicant for the purpose of financial transactions and contractual commitments.

Proposals are invited from UN organizations and non-UN organizations, in the prescribed format. To be considered eligible for this CfP, organizations need to fulfil the following criteria:

- The applicant should be legally registered as a local/national/regional/international organization in Brazil or have a duly registered local partner as part of the consortium applying for the funds;
- The applicant should have significant experience implementing projects on climate and disaster resilient infrastructure in Brazil or similar geographies;
- The applicant should have demonstrated the capacity to implement projects of similar scale and magnitude;
- Applicants that are non-UN organizations should have successfully cleared the HACT micro assessment and PSEAH assessment in the last five years; and
- Proposals can be submitted by a single organization or by a consortium with a prime applicant.

⁴ Templates are provided on the CDRI website.

The following procedures will apply to successful applicants:

- UN Organizations will need to sign the Fund Memorandum of Understanding.
- Non-UN Organizations will need to be accredited based on the United Nations Sustainable Development Group's (UNSDG's) modalities for clearance of non-UN Organizations and sign the framework and financing agreements.

Through the current Brazil CfP, CDRI will continue to support proposals based on UIRP's guiding principles. The CfP emphasizes strengthened partnerships and networks for future-proofing of urban infrastructure; building synergies with other city/national initiatives; and focus on gender inclusion, vulnerable countries, and populations.

2.6 Exclusions

This CfP will not support:

- Construction, refurbishment, operations, and maintenance of the physical infrastructure assets;
- The procurement of goods, tools, and physical assets as a primary purpose; and
- Post-disaster needs assessments.

2.7 Governance and Oversight

Projects funded under this CfP will be implemented under the governance framework of the Infrastructure Resilience Accelerator Fund (IRAF).

The selected Implementing Partner will enter into the required legal arrangements with the UN Multi-Partner Trust Fund Office (UN-MPTFO) and will be responsible for project implementation, financial management, reporting, monitoring, procurement, and compliance with applicable IRAF requirements.

Technical oversight will be provided by the CDRI Secretariat through the UIRP. Progress and results will be reported to the Urban Steering Committee and the IRAF Trust Fund Management Committee, as appropriate.

2.8 Timeline

The deadline for the proposal submission is 4 August 2026, 23:59 IST. Proposals submitted later than this deadline will not be considered.

2.9 Monitoring and Evaluation

The objective of this CfP is to put in place replicable and scalable solutions to enhance infrastructure resilience in Brazil. Consequently, applicants are expected to report transparently on project activities and commit to UIRP's learning culture.

- **Outcome reporting:** Implementing agencies are expected to define specific indicators to monitor the impact of the UIRP support in their proposals and provide baseline data and end-line results to demonstrate positive outcomes;

- **Progress reporting:** Implementing agencies will submit quarterly narrative and financial progress reports against the approved work plan and results framework. Reporting requirements will be specified in the financing agreement;
- **Final Evaluation and Final Report:** At project completion, the Implementing Partner will submit a final narrative report, financial report, and project completion assessment documenting results achieved, lessons learned, sustainability measures, and recommendations for replication and scaling;
- **Knowledge management and learning:** Implementing agencies should document project implementation process and learnings. The implementation partners will participate and present in knowledge-sharing sessions organized by CDRI or its partners; and
- **Access to Project Results:** The implementing agencies shall share and provide access to all the Project Results. The Project Results include but are not limited to all studies, drafts, documentation, information, illustrations, drawings, calculations, designs, image files, raw data, processed data, analyzed data, and any other materials produced or procured for implementation of the Project. The Project Results should be provided in the appropriate open data format.

Further details on the project implementation, monitoring, and evaluation requirements will be shared with the implementing partners of successful applicants.

2.10 Selection Criteria

2.10.1 Essential Requirements

The applicant should ideally have presence within the city/cities proposed, or otherwise within Brazil and should have endorsement from the relevant city government / national government / respective infrastructure management agency.

The applicant, together with the implementing partner organization(s), should have proven experience in the specific theme/sector and adequate technical and institutional capacity to implement the project.

Documents to be submitted (Applicants not fulfilling the criteria will not be considered):

- A letter of support to the applicant from the relevant city government responsible and/or from the respective infrastructure management agency. In multi-city project proposals, endorsement by government agencies from all concerned ULBs, where the technical assistance will be provided, is required.⁵
- Organization profile and details of sectoral experience.

⁵ Template for the letter of support and organization profile are provided in the CDRI Website

2.10.2 Evaluation Criteria

Project proposals will be evaluated against the following criteria:

No.	Criteria	Weightage (%)
A	Organizational Capacity and Eligibility	10
B	Technical Approach and Methodology	40
C	Expected results and impact (including alignment with UIRP outcome indicators)	15
D	Implementation Plan	10
E	Sustainability and Mainstreaming (GEDSI)	15
F	Alignment with National and City Priorities, and International Commitments	10

A. Organizational Capacity and Eligibility (10%) The applicant and implementing partner organization should have proven experience in the specific theme or sector of the proposed project and demonstrate adequate implementation capacity in Brazil, preferably within the proposed city or cities. The assessment will consider:

- Organizational mandate and mission;
- Experience in urban infrastructure resilience, climate adaptation, and disaster reduction;
- Experience implementing similar projects in Brazil or comparable contexts;
- Presence and operational capacity within the proposed geography;
- Qualifications and experience of key personnel; and
- Compliance with eligibility requirements, including HACT and PSEAH assessments.

B. Technical Approach and Methodology (40%) The proposal should demonstrate a sound understanding of the urban resilience challenges being addressed and present a technically robust methodology. Assessment will consider:

- Problem analysis and justification;
- Technical quality and feasibility of the proposed intervention;
- Application of data, tools, risk information, and evidence-based approaches;
- Innovation and relevance to the selected theme(s);
- Appropriateness of the methodology to local conditions; and
- Potential for replication and scaling.

C. Expected results and impact (including alignment with UIRP outcomes) (15%) The proposal should indicate the expected project impacts (direct and indirect) in line with the UIRP and proposed project objectives. Assessment will consider:

- Clarity and realism of expected outputs and outcomes;
- Contribution to UIRP objectives and expected outcomes;
- Potential influence on infrastructure planning, investment, operation, or policy;
- Demonstrated resilience benefits; and
- Potential for generating wider systemic impact.

D. Implementation Plan (10%) Appropriate time and resources for each activity should be indicated, accounting for anticipated risks and delays. Assessment will consider:

- Quality and realism of the work plan;
- Project management arrangements;
- Roles and responsibilities of partners;
- Risk identification and mitigation measures; and
- Monitoring and reporting arrangements.

E. Sustainability and mainstreaming (GEDSI) (15%): The proposal should describe how it will ensure city-level ownership, uptake of project results and deliverables, and lasting impact after the project completion. It should also demonstrate meaningful integration of GEDSI considerations throughout the project cycle including design, implementation, monitoring, and closure. Assessment will consider:

- Institutional ownership and stakeholder commitment;
- Potential for continuation beyond the grant period;
- Integration into existing plans, policies, programmes, or investments;
- Potential to attract additional financing;
- Scalability and replicability of project outcomes;
- Identification of the specific vulnerabilities and needs of different groups;
- Inclusion of women, persons with disabilities, and other vulnerable groups;
- Stakeholder engagement and participation approaches; and
- Measures to ensure equitable access to project benefits and outcomes.

F. Alignment with National and City Priorities, and International Commitments (10%)
The proposal should identify how it will contribute to national/international commitments, global frameworks, regional and national priorities, and city-level initiatives for building infrastructure resilience. Assessment will consider:

- Alignment with existing or proposed city development priorities and plans;
- Alignment with existing or proposed national climate, resilience, and infrastructure strategies, programmes, projects, or initiatives;
- Consistency with UIRP objectives and CDRI priorities; and
- Contribution to broader resilience and sustainable development goals.

[Apply Here](#)
